

# POCKETFUL OF DREAMS

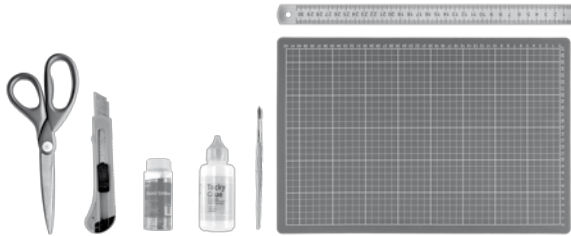


A CRAFTED  
CHRISTMAS

Christmas Card Instructions  
Pop out tree card 135 x 135mm

## What you will need

- A pair of scissors
- Cutting mat
- Craft knife
- Metal ruler
- An A4 printer
- A4 white card (at least 300gsm, check your printer for card weight specifics)
- PVA glue
- Glitter (we like gold, but any colour will do)



## Let's get crafty

- 1 Print the downloaded A4 artwork.

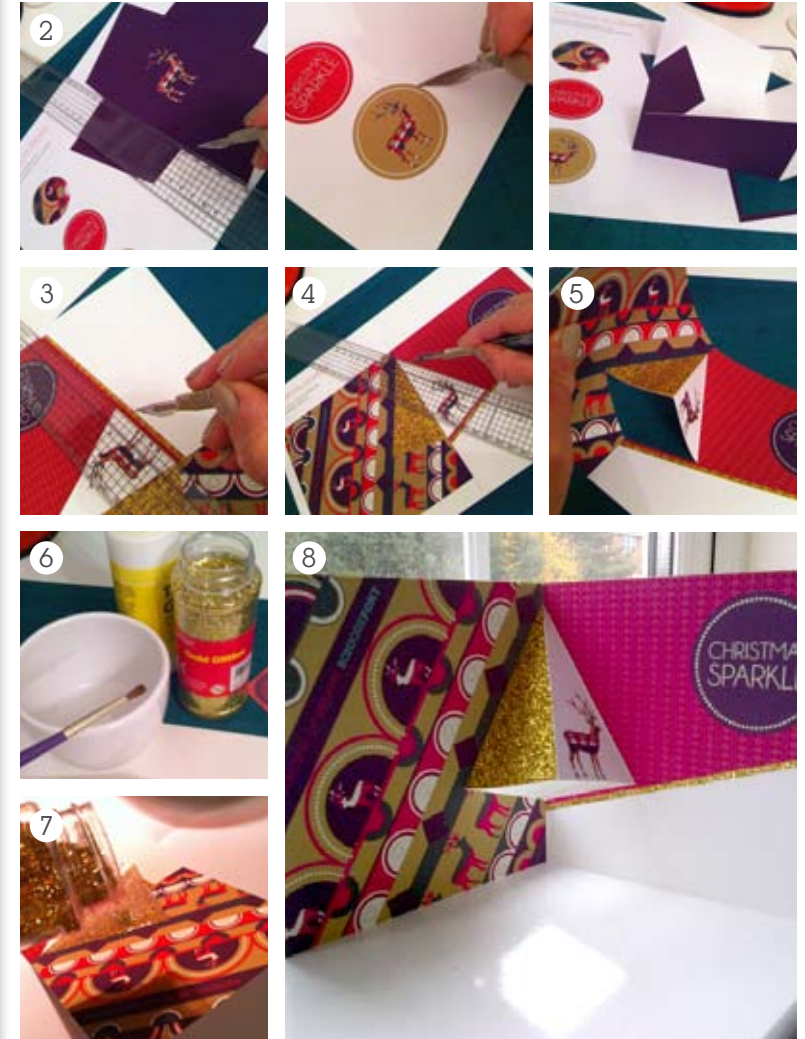


**TOP  
TIP**

**TO ACHIEVE A GOOD QUALITY PRINT  
TRY & USE A PREMIUM PAPER STOCK.  
SELECT AT LEAST 300GSM. WE USED  
PHOTOGRAPHIC INK-JET PAPER.**

- 2 Cut, score and fold the artwork elements. Use the crop marks to line up your ruler and then using the back of your blade, score down the centre of the card.
- 3 Use the blade to cut the bottom line of the triangle tree shape, cutting across the centre fold.
- 4 Use the back of the blade to score a line down each long side of the triangle tree shape.
- 5 Gently ease the card into the creases and fold so the tree pops out in the centre.
- 6 Glue all the glitter areas on the artwork using a small brush.
- 7 Gently shake on the glitter. Wait a few seconds and then tip it off.
- 8 We've left the card blank for you to add your own festive message.

Try World of Envelopes online store for gold or hot pink square envelopes in a 140 x 140mm size.  
[www.worldofenvelopes.com](http://www.worldofenvelopes.com)



# POCKETFUL OF DREAMS

Card 135 x 135mm folded size  
Card design artwork

